

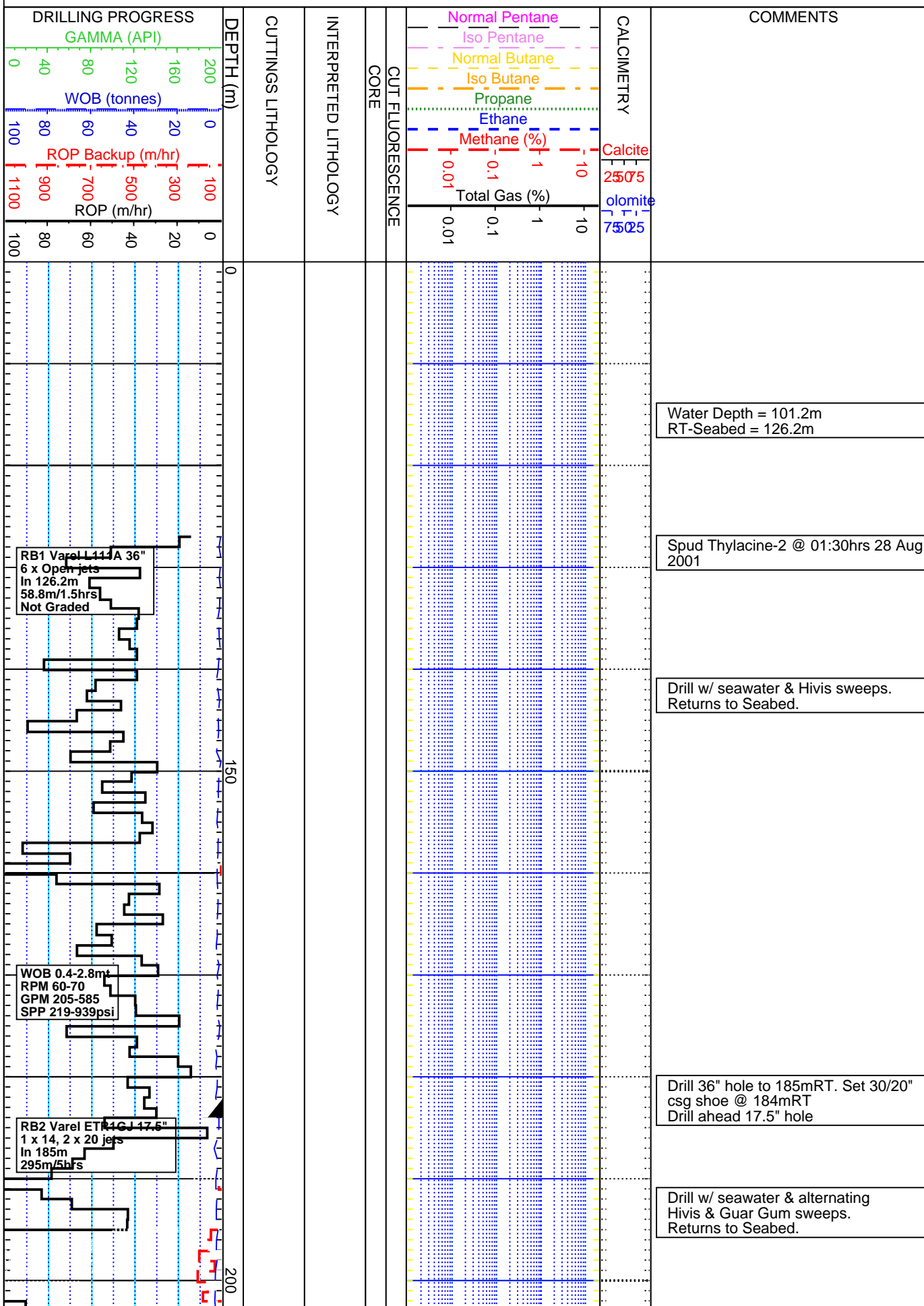


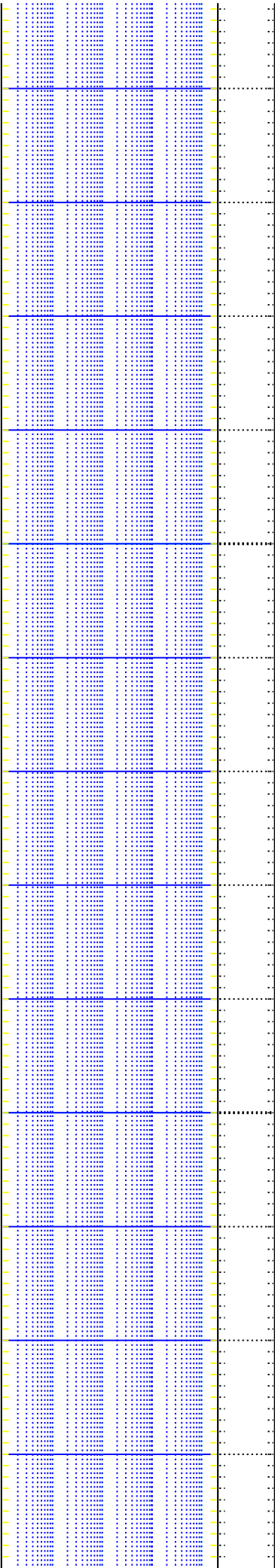
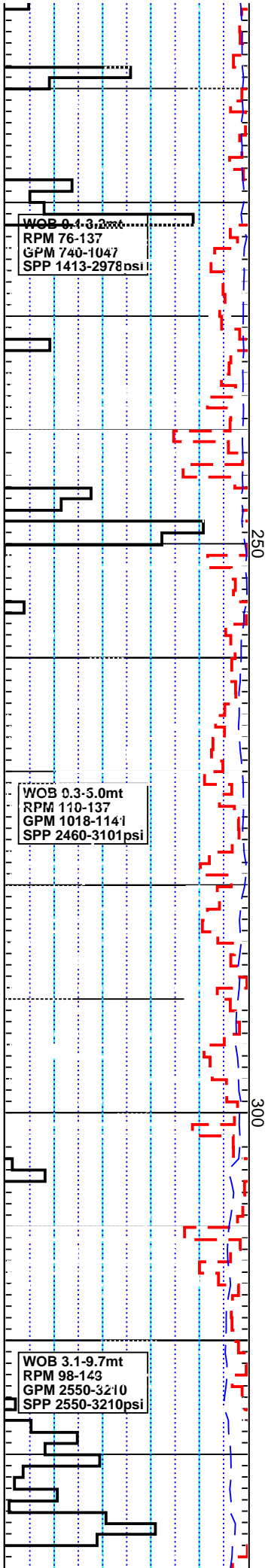
INTEQ

FORMATION EVALUATION LOG

Thylacine-2

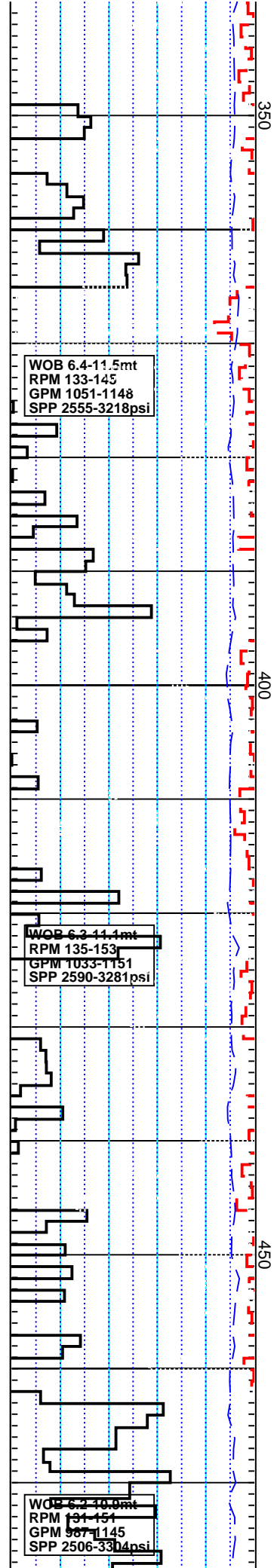
SCALE: 1:500.0





Drill w/ seawater & alternating
Hivis & Guar Gum sweeps.
Returns to Seabed.

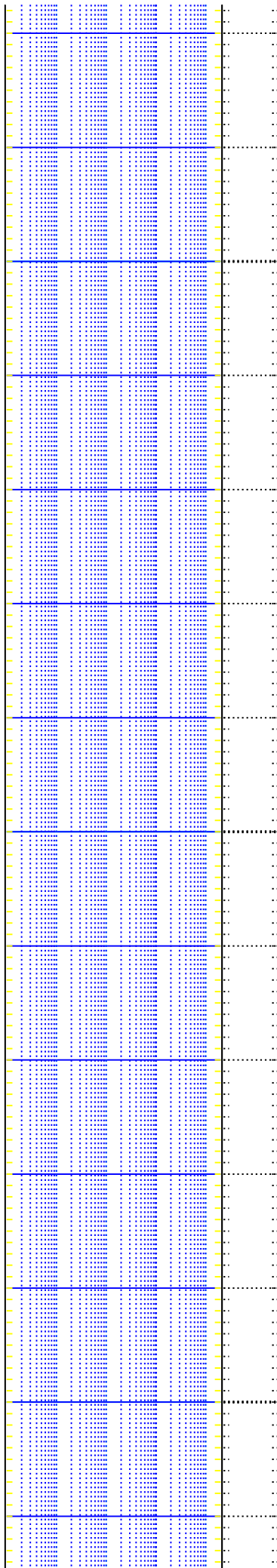
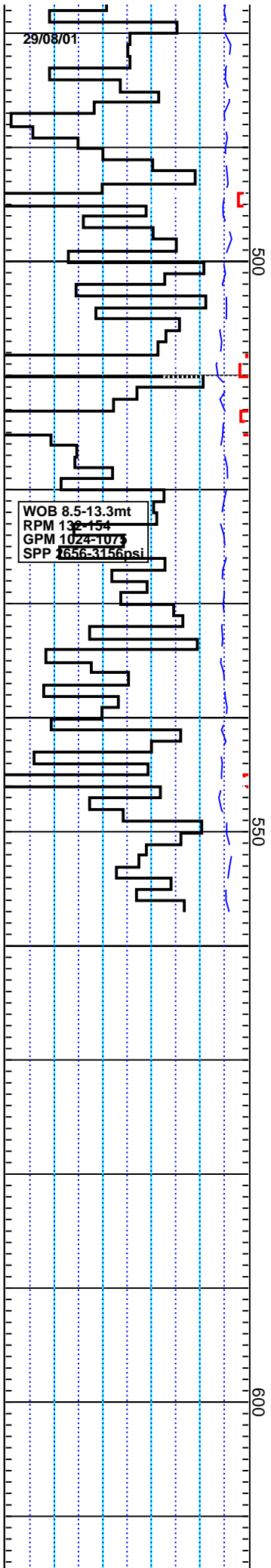
Drill w/ seawater & alternating
Hivis & Guar Gum sweeps.
Returns to Seabed.



Drill w/ seawater & alternating
Hivis & Guar Gum sweeps.
Returns to Seabed.

Drill w/ seawater & alternating
Hivis & Guar Gum sweeps.
Returns to Seabed.

Drill w/ seawater & alternating
Hivis & Guar Gum sweeps.
Returns to Seabed.



Drill w/ seawater & alternating
Hivis & Guar Gum sweeps.
Returns to Seabed.

Drill w/ seawater & alternating
Hivis & Guar Gum sweeps.
Returns to Seabed.

Drill 17.5" hole to 557mRT